



Kobe - Japan

 Kobe, Hyogo, Japan —

/ About Lexis Kobe Campus

Lexis Japan is located in the centre of Kobe, 'Japan's most liveable city', Kobe runs along the slopes of the Rokko Mountains and down to the shore of Osaka Bay.

At first glance, Kobe is a modern, vibrant metropolitan centre, but it doesn't take long to start to discover the unique personalities of the many villages that made up the old town; Find the original 'European quarter',

Japan's longest-established Chinatown, the modern harbour foreshores or, a little further afield, the traditional hot springs at Arima Onsen and the bamboo forests of the Rokko ranges.

More than anything, this is a city that invites patient exploration, with new secrets waiting to be discovered every day.



Explore the best of traditional and modern Japan!



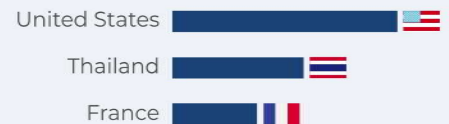
/ Popular Activities

- J-Pop Culture
- Japanese Kimono Experience
- Osaka Kaiyo Aquarium
- The Ramen Museum

/ Iconic Locations

- Osaka Castle
- Kyoto
- Arima Hotspring Town
- Kyukyoryuchi District

/ Top 3 Nationalities



/ Students & Classes

 **90** Students

 **10** Classrooms

 **6** Avg. Class size

/ Offering Courses

- Study Group Tour
- Teen Activity Program: General



Lexis Asia Gangnam | Kobe Campus —

TAP Schedule 2024



/ Program: TAP

	Gangnam TAP General	Kobe TAP General
Dates	1 July – 9 August 24	16 July – 9 August 24 25 November – 27 December 24
Duration	1 week - 6 weeks	1 week - 5 weeks
Program Start Date	Every Monday	Every Monday
Pre Test Dates	Not Required	Not Required
Lessons per week (Mon-Fri)	AM: 3 hours Korean Lesson PM: Various Activities	AM: 3 hours Japanese Lesson PM: Various Activities
Level	Swimwear / Sports Shoes	
Accommodation	Homestay (Single or Double placement)	
Age	13-17	

/ Program Fee

	Gangnam TAP General						Kobe TAP General				
	1 week	2 weeks	3 weeks	4 weeks	5 weeks	6 weeks	1 week	2 weeks	3 weeks	4 weeks	5 weeks
Fees	₩1,690,000	₩2,790,000	₩3,880,000	₩4,970,000	₩6,060,000	₩7,150,000	¥256,000	¥376,000	¥496,000	¥616,000	¥736,000
Package Deal	*Airport Pick Up and Drop Off *College Registration Fee *Tuition *Course Materials *Activities *Transport for activities *Homestay Placement Fee *Accommodation (2 meals per day)										

*Not available to student visa holders



Lexis Japan Kobe Campus —



Summer Activity Program

/ Activities – Week 1



Local Tour

元町、三宮散策

On their first day, students are taken on an afternoon tour so they can be introduced to Motomachi/Sannomiya areas of Kobe. Lively towns with a large shopping arcade, China town district and gourmet cuisine.



Kobe Animal Kingdom

神戸動物王國

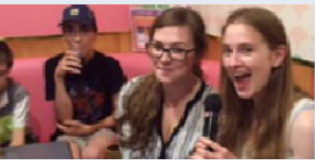
The Kobe Animal Kingdom is a very special place where you can really sense nature. Inside the greenhouse, there are hundreds of plants and flowers hung from the ceiling and they are just beautiful. You will get to feed animals and birds, and pat them too!



The Ramen Museum

拉麵博物館

Students will experience how cup noodles are produced as they knead, stretch and flavour flour making their very own chicken ramen. Students will also be able to wander through the museum and discover the history of the world's first instant noodle, invented in Ikeda, Japan.



Karaoke Competition

卡拉OK趣味競賽

Join Karaoke! One of Japan's favourite past times. Sing your favourite songs in the comfort of sound proof rooms. Don't be shy! We can sing all together!



Osaka Castle

大阪城

Osaka Castle is one of the most famous castles in Japan. It played a major role in the unification of 16th Century Japan. Take a step back in time and experience what life would have been like living in Osaka Castle, or take a walk through the famous Osaka Castle gardens.

/ Activities – Week 2



Local Tour or Free Time

元町、三宮散策或自由活動

Students will have the opportunity to explore the surrounding areas of Motomachi and Sannomiya.



Osamu Tezuka Manga Museum: The Creator of Astro Boy

手塚治虫紀念館

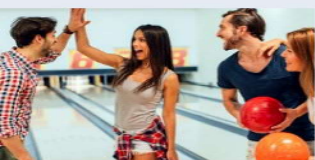
The Tezuka Osamu Manga Museum in Takarazuka is where the world famous manga creator of Astro Boy lived for 20 years. The museum has many exhibitions about the life of the artist along with his visions for the creation of Astro Boy.



Cooking Class

烹飪教室

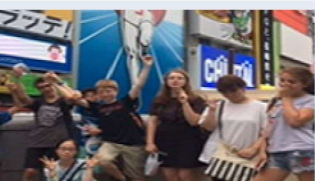
A chance to learn how to cook some traditional Japanese dishes. Learn how to cook it and let's have nice Japanese lunch together. Don't forget to cook it for your family and friends when you go back to your country!



Bowling Competition

保齡球競賽

Time for some fun indoor exercise! A great fun activity on a hot summer's day. Win some prizes in a special time limit event! Go get a strike!!!



Pop Culture in West Japan

大阪觀光

Take a visit to Osaka, the pop culture capital of West Japan. Visit the areas of Nipponbashi and Namba and experience the excitement of Japanese pop culture first hand.



/ Activities – Week 3



Local Tour or Free Time 元町、三宮散策或自由活動

Students will have the opportunity to explore the surrounding areas of Motomachi and Sannomiya.



Kobe Beef Lunch 品嚐神戸牛

Have you heard of Kobe beef? Kobe is well known world-wide thanks to Kobe beef! Enjoy the taste of the world famous succulent Kobe beef at one of Kobe's many famous Kobe beef restaurants.



Calligraphy & Name Stamp Making 書法體驗及印章製作

Students can have the opportunity to try the traditional art of Shodo or Japanese Calligraphy. New to Kanji? Don't worry! You should be able to write your name in Kanji by the end of this activity! You will make your own name stamp (Hanko) too.



Kobe Bay Cruise & Kobe Mosaic Ferris Wheel 神戸渡輪及馬賽克摩天輪

This recreational cruise lasts for 45 mins and travels to all the scenic attractions of the Kobe seaside, including Kobe Airport, Kobe Harbour, and the surrounding islands.



Japanese Kimono Experience 和服體驗

The summer Kimono is called Yukata and Japanese people enjoy wearing Yukata in summer. Choose your favourite pattern/colour yukata and visit nearby shops and temples!

/ Activities – Week 4



Local Tour or Free Time 元町三宮散策或自由活動

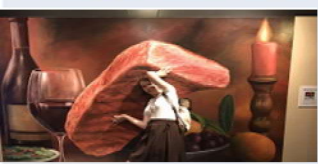
Students will have the opportunity to explore the surrounding areas of Motomachi and Sannomiya.

明石海峽大橋及神戸三田Premium Outlet



Akashi Kaikyo Bridge & Kobe Premium Outlet

Akashi Kaikyo Bridge is the longest suspension bridge in the world. This bridge links Kobe to Awaji Island. Kobe Premium Outlet is a very popular place for shopping for local people. It is a 15 minute walk from the Akashi Kaikyo Bridge along the beach.



Trick Art Museum & Kitano Area 神戸錯覺藝術館及北野散策

The Kitano area is dotted with residences built by foreigners who arrived in Kobe after the port opened. It is a popular sightseeing area. The Trick Art Museum is located in one of these old European-style buildings. This is a very fun photo taking spot!



Okonomiyaki Lunch & Kaleidoscope Making 大阪燒及萬花筒DIY

Okonomiyaki is a Japanese savoury pancake containing a variety of ingredients. The name is derived from the word okonomi, meaning "what you like" and yaki meaning "grilled" or "cooked". The dish is a popular meal in the Kansai region and renowned for being delicious.



Osaka Aquarium 大阪海遊館

One of Japan's most spectacular aquariums is located in the Tempozan Harbour village of Osaka's bay area. The aquarium exhibits various life forms that inhabit the Pacific Rim. The main tank, at 9 meters deep, houses the museum's main attraction – a whale shark!